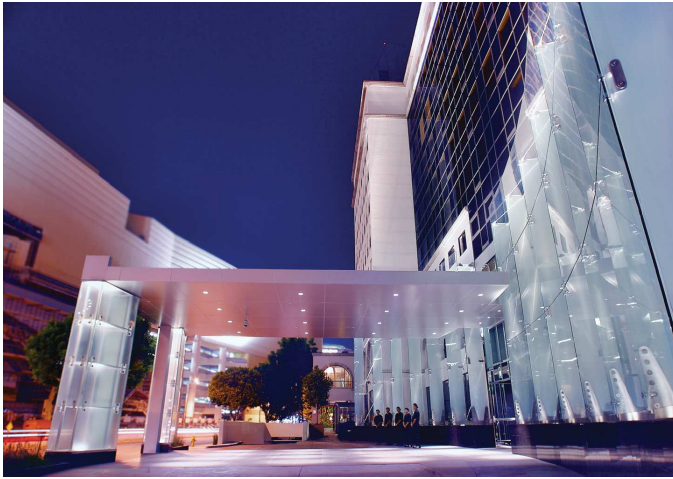


MAGNIFIQUE MEETINGS AT SOFITEL LOS ANGELES AT BEVERLY HILLS



Hotel facade



Beverly Ballroom

DISCOVER THIS STUNNING ADDRESS, BLENDING HOLLYWOOD GLAMOUR AND FRENCH ELEGANCE, SITUATED IN THE HEART OF THE BEAUTIFUL CITY OF LOS ANGELES.



Hollywood Hills view luxury room

ROOMS & SUITES

- 295 Rooms on 10 floors
- 26 Suites and 2 Presidential Suites
- Gorgeous city and Hollywood Hills views

DISTINCTIVE FEATURES

- SoBed™- Sofitel's luxurious feathertop and duvet sleep system
- Lanvin, Balmain and Hermès luxury French bath amenities

FEATURES & AMENITIES

- High-definition LCD television with laptop connect • Wired and wireless internet access • Mini bar • Safe deposit box • Spacious bath with rainfall shower and luxurious French toiletries

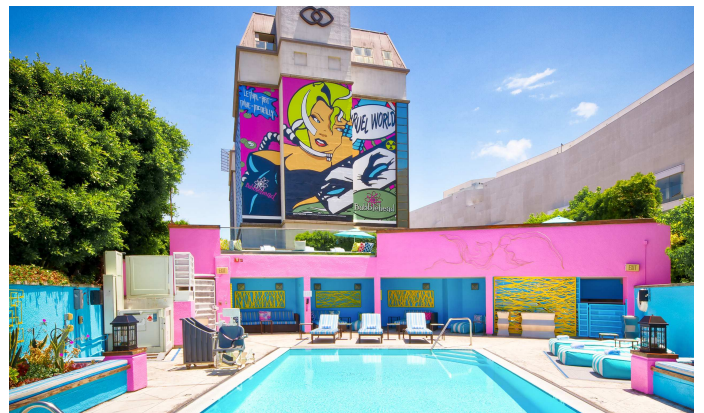
AMENITIES

FOOD & BEVERAGE

- **Estere!**: Named after the mountains in Southeast France, our breakfast restaurant is set in a chic and stylish ambiance.
- **Cattle & Claw**: our SoCal eatery gives in-the-know omnivores a place to enjoy two of the world's favorite foods - lobsters and burgers.
- **Riviera 31**: Breathtaking liveperformances, delicious mixology cocktails and bar bites, and stunning decor: Riviera 31 hosts the best nights in town.

WELLNESS

- **SoSPA**: luxurious haven of well-being, with a wide menu of beauty and body treatments delivering indulgence from head to toe.
- **Le Salon**: featuring three chic stylist stations with floor to ceil mirrors, a drying station, makeup application area, and a charming patio.
- **Fitness Center**: Features state-of-the-art cardio machines, strength training stations, weights, steam rooms, three Peloton bikes and an outdoor heated pool



Pool



Beverly Center

NEARBY

The hotel boasts a prime location, one mile from Beverly Hills and West Hollywood, at the epicenter of Los Angeles. Sofitel Los Angeles at Beverly Hills is located across the street from the Beverly Shopping Center, just minutes from world-class shopping on Robertson, Melrose, The Grove, Rodeo Drive and the vibrant nightlife of the Sunset Strip.

TRANSPORT

- Railway Union Station/Amtrak (14.48 km / 9 mi)
- Los Angeles International Airport (16.9 km / 10.5 mi)
- Burbank International Airport (19.31 km / 12 mi)



Sunset/Hollywood Junior Ballroom

MAGNIFIQUE MEETINGS

Sofitel Los Angeles at Beverly Hills offers a chic meeting experience. Our newly refreshed event venues are designed to reflect French modern chic design with a classic Hollywood twist. Set the stage for a new standard of meeting excellence with 10,000 sqft of flexible event space featuring impeccable service, delicious catering, and onsite AV. The restaurant, bar and patio on the 1st floor provide 12,000 sqft of additional space.

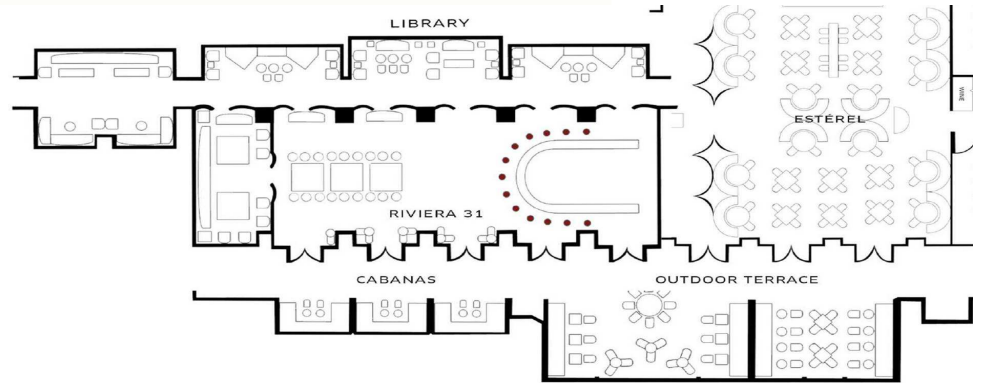
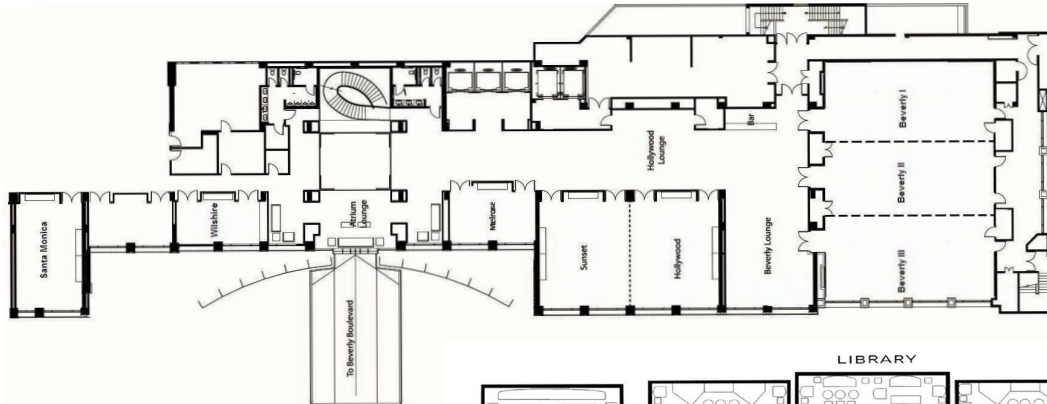
Distinctive features

- 22,000 sqft of indoor/outdoor meeting & event space
- Floor to ceiling windows in all meeting rooms
- Onsite AV
- No sight obstructions and columns
- Dedicated banquet kitchen and service team

| | AREA (FT) | HEIGHT (FT) | LENGTH (FT) | WIDTH (FT) | CLASSROOM | THEATRE | U SHAPE | BOARD | BANQUET | RECEPTION | HOLLOW SQUARE | CRESCENT ROUNDS |
|---------------------------|-----------|-------------|-------------|------------|-----------|---------|---------|-------|---------|-----------|---------------|-----------------|
| BEVERLY 1 | 1150 | 14 | 50 | 23 | 65 | 100 | 40 | 40 | 80 | 125 | 48 | 50 |
| BEVERLY 2 | 1440 | 14 | 60 | 24 | 65 | 100 | 40 | 40 | 80 | 125 | 48 | 50 |
| BEVERLY 3 | 1150 | 14 | 50 | 23 | 65 | 100 | 40 | 40 | 80 | 125 | 48 | 50 |
| BEVERLY BALLROOM | 3850 | 8 | 55 | 70 | 220 | 400 | 70 | | 300 | 400 | 90 | 175 |
| BEVERLY LOUNGE | 1404 | 8 | 54 | 26 | | | | | | 300 | | |
| HOLLYWOOD ROOM | 884 | 8 | 34 | 26 | 45 | 75 | 35 | 30 | 60 | 75 | 40 | 35 |
| SUNSET ROOM | 952 | 8 | 34 | 28 | 45 | 75 | 35 | 30 | 60 | 75 | 40 | 35 |
| HOLLYWOOD & SUNSET ROOM | 1870 | 8 | 34 | 55 | 90 | 150 | 40 | 40 | 120 | 150 | 45 | 70 |
| HOLLYWOOD & SUNSET LOUNGE | 1134 | 8 | 54 | 21 | | | | | | 135 | | |
| MELROSE BOARDROOM | 416 | 8 | 16 | 26 | | | | 20 | | | | |
| WILSHIRE BOARDROOM | 325 | 8 | 13 | 25 | | | | 15 | | | | |
| SANTA MONICA ROOM | 504 | 9 | 42 | 12 | 30 | 50 | 25 | 25 | 36 | 50 | 30 | 25 |
| RIVIERA 31 LOUNGE BAR | 3654 | 9 | 87 | 42 | | | | | | 300 | | |
| DINING RESTAURANT | 2820 | 11 | 60 | 47 | | | | | | 120 | | |
| GRIFFITH PDR | 266 | 11 | 14 | 19 | | | | 10 | | | | |
| RUNYON PDR | 228 | 11 | 12 | 19 | | | | 12 | | | | |
| OUTDOOR PATIO | 3496 | | 23 | 152 | | | | 60 | | 120 | | |
| THE AVIARY - EAST PATIO | 1273 | | 67 | 19 | | | | 25 | | 60 | | |
| ENDCAP OUTSIDE | | | | | | | | | | 60 | | |
| UPPER POOL DECK | 1363 | | 29 | 47 | | | | 50 | | 100 | | |
| LOWER POOL DECK | 2580 | | 60 | 43 | | | | | | 125 | | |
| AUTOLOUNGE | 3024 | 10 | 56 | 54 | | | | | 220 | 350 | | |



Wilshire Boardroom



Our commitment is to keep you safe and well, for the gatherings of today and tomorrow. As we navigate through this unprecedented moment in our history, this means ensuring that you are safe when you gather in our hotel. And though it is impossible to know what tomorrow holds, please be assured that we are looking ahead, through and past the COVID-19 pandemic, to ensure that you, our valued planners, delegates, attendees and guests, will always be looked after with the highest degree of care and comfort. **Meet well with ALL.**

SOFITEL
HOTELS & RESORTS

LOS ANGELES AT BEVERLY HILLS

8555 BEVERLY BOULEVARD, 90048 LOS ANGELES - USA
TEL.: +1 (310) 278 5444 - SOFITEL.LOSANGELES@SOFITEL.COM
WWW.SOFITEL-LOS-ANGELES.COM